

# The Global **NEW LIGHT** of MYANMAR

**NATIONAL**

PAGE-2

Research continues on ancient Mon cities Khapin and Kyaikpa in Twantay Township

**NATIONAL**

PAGE-5



Rural Tradition: 200+ years of bullock cart pilgrimage preservation

**NATIONAL**

PAGE-6



Online passport booking now available in Nay Pyi Taw and three regions



A diligent worker organizes pulse sacks in the warehouse.

## Myanmar's pulse exports surge to US\$1.18B in 10.5 months

The value of Myanmar's pulses exports totalled over US\$1.47 billion from over 1.9 million tonnes in the previous FY 2022-2023.

**SEE PAGE-7**

# Taninthayi Region halts new offshore fishing licences to preserve aquatic resources



The photo shows fishing trawlers in Taninthayi Region.

U ZAW MIN OO, Deputy Director of the Fisheries Department in Taninthayi Region, announced that no new licences for offshore fishing trawlers would be issued in Taninthayi Region to preserve aquatic resources.

“We’re not granting new licences for offshore fishing trawlers because the catch exceeds sustainable levels. However, we can’t revoke existing licences; instead, we’re renewing old ones. We’ve completely halted the issuance of new licences,” he stated.

Additionally, observation showed that excessive use and exploitation of water resources have led to a 60-per-cent decline in underwater resources and an 80-per-cent decline in above-water resources. From 1979 to 2018, three research studies were conducted on Myanmar’s sea resources. Following the findings from a Norwegian research vessel, no specific fishing seasons have been designated, and restrictions have been placed on offshore fishing licences.

For generations, water resources from Taninthayi Region have been exported to Ranong in Thailand. Currently, there are over 1,500 offshore fishing trawlers in Taninthayi Region and more than 6,000 licensed onshore fishing trawlers in Myeik District. — ASH/MKKS

# NATIONAL

## Research continues on ancient Mon cities Khapin and Kyaikpa in Twantay Township



Old glaze kiln workshops in Twantay.

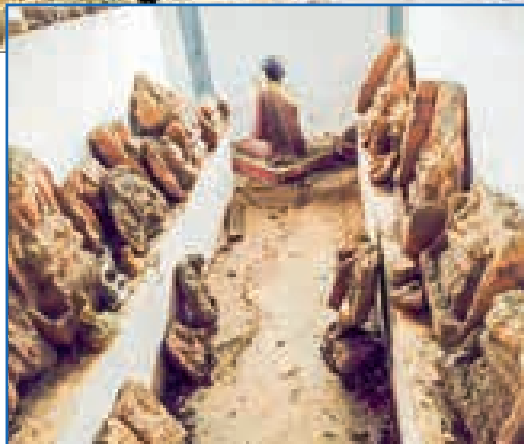
THE Twantay Ancient Heritage Trust has announced plans to continue studying the remnants of the ancient Mon cities Khapin and Kyaikpa in Twantay Township, Yangon Region.

U Saw Myint Swe, a member of the trust, stated, "We have preserved the ancient city of Dala in Twantay, which accommodates over 2,000 age-old glaze kilns. Both local and international historians and glaze experts are currently studying it."

These two ancient Mon cities, situated along the Dala-Twantay road, have yet to be excavated. According to the trustees, Twantay still harbours many unexplored ancient cities and pagodas with Mon architectural styles in its forests.

While there have been some studies on Khapin, Kyaikpa remains untouched. Further explorations may shed light on Twantay's past and contribute to unravelling the mysteries of the ancient Mon civilization in the delta region, which could predate even the Bagan era.

The trustees speculate that these two cities might be among the oldest settlements in the delta, extending from the Cape of Nagarit to



the Sittoung River.

Khapin, located southeast of Kanbe Village, is estimated to have walls stretching for 2,300 metres, enclosing an area of 67 acres. Despite its modest size, it holds significance as the most historically significant city in the delta region before the Bagan era.

Kyaikpa, positioned four miles west of Khapin, is the latest discovery among ancient Mon cities in Twantay. It spans 1,700 feet from the south to the north and 1,200 feet from the east to the west, with a similar area to Khapin. Surrounding landmarks include Kyaikphu and Kyaikpa pagodas, along with Baungtawchoke Pagoda. — ASH/NT

## Objectives of 79<sup>th</sup> Anniversary of Armed Forces Day 2024

- (A) To safeguard the State with the sacrifice of life by upholding Our Three Main National Causes: Non-disintegration of the Union, Non-disintegration of national solidarity and perpetuation of sovereignty as the national policy of Tatmadaw;
- (B) To actively participate in implementing the processes of two national visions of the State: the prosperity of the country and food security by Tatmadaw members together with the government and ethnic people in their respective sectors;
- (C) To steadfastly implement enhancement of three capabilities in accord with the work process of Tatmadaw, such as study, practise and obey in building a modern patriotic Tatmadaw with powerful strength and sharpening prowess;
- (D) To provide necessary assistance to hold a free and fair multiparty democratic general election by Tatmadaw to ensure peace and stability, solidarity and development, which are actual needs of the State and to emerge a Union based on democratic and federal systems.

## 5 special civil appeals heard

A special appeal tribunal comprising Chief Justice of the Union U Thar Htay and Judges of the Supreme Court of the Union: U Myo Tint, U Myo Maung, U Tin Hone and Daw Thin Thin Nwet was convened Monday morning at the Supreme Court of the Union and a total of five special civil appeal cases — Nos 33/2023 (Ayeyawady), 40/2023 (Mon), 43/2023 (Yangon), 50/2023 (Yangon) and 51/2023 (Yangon) were heard. — MNA

## Ministry of Health expands access to specialist care in hospitals

THE Ministry of Health aims to enhance healthcare accessibility and improve healthcare processes as part of its social objectives, as outlined by the State Administration Council.

Formerly, individuals could only take consultation of professors and specialists at the Outpatient Department (OPD) of public hospitals with over 100 beds in the morning. To realize the social objectives, consultations with professors and specialists are now available not only in the morning but also in the after-

noon, starting from August 2023.

Patients can receive treatment by presenting referral letters from regional clinics, township hospitals, private hospitals, or relevant clinics to the specialist outpatient department based on their respective medical conditions. Additionally, it is advised to check the timetables of specific hospital outpatient departments before visiting, as these schedules are posted on vinyl boards at hospitals and on the Ministry of Health website [www.doms.gov.mm](http://www.doms.gov.mm). — MNA/TRKM

## Mawlamyine's Mt Taungwine trekking season ends 25 February

THE trekking season of Mount Taungwine, which attracted a lot of interest, ended on 25 February.

"As this is the last week of the trekking season, we planned to walk the trekking path to Mt Taungwine. After this weekend, the trekking season will end," said

the Sasana Nwe Foundation. Starting on 2 December 2023, Mt Taungwine trekking season attracted many pilgrims from other states and regions in addition to locals, and there were more trekkers among visitors on the weekend, said the residents.

The trekking season starts

in December and ends in February every year for those who want to hike for health and those who like to take a pilgrimage tour. For safety reasons, the trekking time this year was reportedly set from 6 am to 6 pm, and a free parking lot was provided from 4:30 am to 8 am.

— MT/ZN



## Correctional Department celebrates 12<sup>th</sup> anniversary

THE Correctional Department under the Ministry of Home Affairs celebrated its 12<sup>th</sup> anniversary in Nay Pyi Taw yesterday.

The event was attended by State Administration Council Member Union Minister for Home Affairs Lt-Gen Yar Pyae, deputy ministers, the permanent secretary, directors-general, and staff of the department.

At the ceremony, the Union Minister highlighted the objectives and eight-point

roadmap of the Correctional Department and the need to follow two national visions, two political visions, a five-point roadmap and nine objectives of the government as “policy”.

He then urged the staff to treat the prisoners as per the motto of the department and make efforts to be reliable for the public and outstanding staff by following the law, rules, procedures and directives of the department.

Next, he presented Ye Bala medals, certificates of honour,



SAC Member Union Home Affairs Minister Lt-Gen Yar Pyae poses for a documentary group photo during the 12<sup>th</sup> Anniversary Celebration of the Correctional Department yesterday in Nay Pyi Taw.

and cash awards to the wives and families of nine recipients of Loikaw Prison, while foodstuffs and cash assistance were given to the staff.

Deputy ministers, the permanent secretary and the director-general of the Correctional Department also awarded the staff who won prizes in

Myanmar Traditional Cultural Performing Arts Competitions and outstanding staff. — MNA/KTZH

## Seminar on Awareness, Exchanging Practices to Implement RCEP Agreement

THE opening ceremony of the Seminar on Awareness and Exchanging Practices for the Implementation of the RCEP Agreement, which is a project to be implemented with the Mekong-Lancang Cooperation Special Fund (2023), was held yesterday morning at Horizon Lake View Resort in Nay Pyi Taw.

The opening ceremony was led by Dr Kan Zaw, Union Minister for Investment and Foreign Economic Relations, and attended by Dr Wah Wah Maung, Deputy Minister, Mr Zheng Zhihong, Minister Counsellor of the Chinese Embassy to Myanmar, representatives from the Embassies of the Mekong-Lancang member countries, Vice-chair of the Mekong-Lancang Cooperation National Coordination Unit (Myanmar) from the Ministry of Foreign Affairs, resource persons, senior officials from ten relevant ministries, representatives from the government agencies and private sectors of Mekong-Lancang member countries; Cambodia, Lao PDR, Thailand, Myanmar and Viet Nam.

The Union minister delivered the opening address, highlighting that the RCEP Agreement is an open, inclusive, and rules-based multilateral trading system that will



Union Minister Dr Kan Zaw poses for the group photo at the yesterday's seminar in Nay Pyi Taw.

create new trade opportunities among Asian countries and accelerate the region's economic recovery; Seminar on Awareness and Exchanging Practices for the Implementation of the RCEP Agreement aims to promote a deeper understanding and greater application of the RCEP Agreement; understanding the tariffs and rules of origin under the RCEP Agreement will get optimal benefits for preferential tariff treatment of the RCEP Agreement; and he encouraged officers and private sector to implement and utilize the RCEP Agreement effectively and efficiently applying the knowledge and experience got from this Seminar.

Continuously, Mr Zheng Zhihong, Minister Counsellor of the Chinese Embassy to Myanmar, also delivered the remarks, highlighting China is always promoting the high-quality implementation of RCEP; China plays an active role in regional trade, investment and promoting tariff reductions, including market opening commitments; China's total imports and exports with the other 14 RCEP member countries reached RMB 12.6 trillion in 2023, a 5.3-per-cent increase from 2021 before the agreement took effect; In 2023, China's trade volume with ASEAN member countries reached RMB 6.41 trillion.

In the welcoming remarks

of the vice-chair of the Mekong-Lancang Cooperation National Coordination Unit (Myanmar) from the Ministry of Foreign Affairs, he highlighted that this year marks the 8<sup>th</sup> Anniversary of MLC; a Special Fund established in 2017 by the sole contribution of China to be used for all six member countries; as of now, over 780 projects have been implemented in six member countries; Myanmar has received a total of 106 projects to date worth of over US\$31 million in various sectors from Agriculture down to the Human resource development.

At the Seminar, the resource persons from China, Thailand and Viet Nam will discuss the

Trade in Goods Chapter, Rules of Origin, Tariff Differentials and Customs Procedures and Trade Facilitation of the RCEP Agreement with the aim of facilitating the implementation of the RCEP Agreement. Moreover, the readiness and challenges of the Implementation of the RCEP Agreement will be shared and exchanged at the Seminar.

The Seminar is being conducted in person at Nay Pyi Taw from 26 to 28 February 2024 for three days by the Mekong-Lancang Cooperation Special Fund. A total of 40 participants were from Myanmar, one participant from China, 10 participants from Cambodia, 10 participants from Lao PDR, nine participants from Thailand and five participants from Viet Nam; totally 75 participants attended the Seminar.

The RCEP Agreement is the world's largest free trade agreement, which was signed by 10 ASEAN member countries, Australia, China, Japan, Korea and New Zealand. RCEP includes chapters covering trade in goods, trade in services, investment, economic and technical cooperation, and creates new rules for electronic commerce, intellectual property, government procurement, competition, and small and medium-sized enterprises. — MIFER

# NATIONAL

## MoI Union Minister receives SEAVFC President

UNION Minister for Information U Maung Maung Ohn received Ms Elvira Yap Go, founder and president of Southeast Asia Video Festival for Children (SEAVFC) in Nay Pyi Taw, yesterday.

During the meeting, the two sides cordially discussed the set-up of SEAVFC, the 4<sup>th</sup> SEAVFC to be held in Malaysia, cooperation work with Myanmar, efforts of the Myanmar government focusing on the youth sector, including enhancement of cooperation with regional countries, willingness to show off honesty and generosity of Myanmar people and future collaboration.

The SEAVFC has been held three times since 2017, and Myanmar has won awards every



Union Minister U Maung Maung Ohn holds talks with Ms Elvira Yap Go, SEAVFC founder and president, yesterday in Nay Pyi Taw.

Heroes” (9-12 years old category) and Ma Su Latt Shwe Yi Zaw with her short video “Smile” (13-16 years old category) in 2018, and Maung Arkar Min Khant won in 2019 (9-12 years old category).

The meeting was also attended by Deputy Minister U Ye Tint, Permanent Secretary U Myo Myint Maung, departmental officials, former Philippine Ambassador Minda C Curz and officials of the Philippine Anak TV.

At noon, the SEAVFC President visited Maravijaya, the world’s tallest sitting marble Buddha image, in the precinct of Buddha Park in Dekkhinathiri Township of Nay Pyi Taw. — MNA/KTZH

competition. In 2017, director Kyaw Hninzi won the profession-

al level with the title “May The Fragrance of Thanaka Last” in

2017, while Ma Su Lin Lei won with the short video “Everyday

## DPM MoFA UM meets ministry officials, ambassadors

ON 26 February, Deputy Prime Minister and Union Minister for Foreign Affairs U Than Swe convened a meeting with ambassadors, directors-general, officials, and staff from various departments at Lawkanat Hall of MoFA in Nay Pyi Taw.

During the meeting, the Deputy Prime Minister emphasized the importance of administration, management, and supervision within the Ministry. He stressed that only through effective management can fairness and correctness be maintained in policy implementation. He urged employees to demonstrate loyalty to the State and to carry out their duties promptly and accurately, keeping in line with the demands of the current circumstances. Following this, employees voiced their needs and suggestions, while officials from relevant departments outlined plans to address these requirements.

In conclusion, the Deputy Prime Minister delivered additional remarks and concluded the session with a closing speech. — MNA/TKO



## Counter-argument to false information

### Security forces dismiss alleged arrests and extortion by DVB

THE Democratic Voice of Burma (DVB), an illegal subversive media outlet, is spreading misinformation on social networks, alleging that security forces in Mawlamyine Township, Mon State, have arrested and extorted money from at least 50 young men between 10 and 24 February.

However, according to a security official from Mawlamyine Township, security operations in Mawlamyine are aimed at law enforcement and maintaining community peace. There have been no arrests of young individuals or incidents of extortion.

Similarly, false information is being circulated in townships and wards in Ayeyawady Region, claiming that personal data is being collected from men aged between 18 and 35.

These illegal subversive media outlets, which seek to disrupt community peace and stability, are spreading propaganda to instigate fear and unrest. They disseminate false news, such as claims that security forces and administrative organizations are forcibly recruiting



Screenshot validates false claims.

individuals for military service and conducting unwarranted arrests.— MNA/TKO

Global NEW LIGHT of MYANMAR  
www.gnlm.com.mm

**CIRCULATION & DISTRIBUTION**  
(+95) (01) 8604532,  
Hotline - 09 255597511

**ADVERTISING & MARKETING**  
(+95) (01) 8604530,  
Hotline - 09 251022355  
marketing@gnlm.com.mm  
subscription@gnlm.com.mm

Printed and published at the Global New Light of Myanmar Printing Factory at No.150, Nga Htat Kyee Pagoda Road, Bahan Township, Yangon, by the Global New Light of Myanmar Daily under Printing Permit No. 00510 and Publishing Permit No. 00629.  
[gnlmnews@gmail.com](mailto:gnlmnews@gmail.com),  
[newsroom@gnlm.com.mm](mailto:newsroom@gnlm.com.mm)  
[www.gnlm.com.mm](http://www.gnlm.com.mm)

### Write for us

We appreciate your feedback and contributions. If you have any comments or would like to submit editorials, analyses or reports please email [aungthuya@gnlm.com.mm](mailto:aungthuya@gnlm.com.mm) with your name and title.

Due to limitation of space we are only able to publish “Letter to the Editor” that do not exceed 500 words. Should you submit a text longer than 500 words please be aware that your letter will be edited.





# NATIONAL



Images (above, top right, and bottom right) showcase the timeless charm of a rural tradition: the bullock cart pilgrimage, kept in tact for over two centuries.

## Rural Tradition: 200+ years of bullock cart pilgrimage preservation

MINHLAKYIN Village, formed with more than 200 houses and located more than 20 miles from Minbu Township of Magway Region, is the sole village across the nation to preserve the traditions of residents for more than 200 years to date in the use of bullock carts on their pilgrimage tour.

Villagers make the pilgrimage tour to Mann Shwesehtaw Pagoda once a year. Except for older persons and those who do not have bullock carts, all villagers happily make the seven-day pilgrimage tour from the 13<sup>th</sup> Waxing to the 4<sup>th</sup> Waning of Tabaung, said village adminis-

trator U Ohn Kyaing.

Along their route, the bullock carts station at the jetty of Mann Creek. For the time being, those villagers visit two sacred footprints of the Lord Buddha, Koekhangyi Pagoda and 28-Buddha images, offer oil lamps, water and flowers there dedicating to

the Lord Buddha, taking Sabbath, reciting Pathana treatises and taking meditation with dispersing compassion.

In the afternoon, they also visited the golden deer farm and the star tortoise farm at Shwesehtaw Wildlife Sanctuary for observation. They also enjoy

elephant shows at Shwesehtaw Mannchaung elephant camp and ride elephants to view fascinating scenes. They plan to spend all their spare time touring all parts of Shwesehtaw Pagoda and surrounding significant sites to enjoy the pleasure of the pilgrimage trip. — Zeyar Htet (Minbu)/TTA

## Undocumented Myanmar migrants queue at CI issuing stations in Thailand

MANY undocumented migrant workers from Myanmar have come to five stations and three mobile units in Thailand for the Certificate of Identity (CI) service since the morning of 23 February, according to an activist for Myanmar workers in Thailand.

Five CI issuing stations are located in Samut Sakhon, Samut Prakan, Chonburi, Patong, and Surat Province, and three mobile units are stationed in Chiang Mai, Nakhon Sawan, and Songkhla.

“Nearly 800 workers came to CI station in Samut Prakan alone to apply for the booklets. That is just the first day. Workers with Thai Pink Card IDs (called baht-stamped persons by Myanmar migrants) will only be able to travel conveniently from one district to another if they obtain a CI booklet. With CI, they can even return home by plane, so most Myanmar migrants are waiting to get it,” he said.

The issuance of CI was witnessed and supported by Myanmar Ambassador U Myint Swe, Labour Attaché U Myo Min Aung, and officials from United KMK and Partner Associates International Co Ltd.



The Myanmar ambassador, labour attache and officials view round the CI issuing station in Thailand.

“Every station will be crowded as there will be many applicants. That is an opportunity. Workers from our country will find it easier to get a job while the state will earn foreign revenue,” he added.

As many people have entered Thailand illegally, Thai authorities have tightened security at the border and stepped up the arrest of illegal migrants, as they have frequently done in the past. — MT/ZN

## Locally-grown garlic price still rises due to low supply of Chinese garlic

DESPITE the availability of newly harvested garlic, garlic prices have been still on the rise due to low supply from China, according to garlic wholesale centres.

Due to transport difficulty, the supply of China-imported garlic has been low, and the demand for locally-grown garlic has been climbing up, which is why the price has been reasonable, said wholesalers.

“Now, old garlic has been out of stock. That is the new harvesting season, but the price has been still on the rise as the crop has been rare because the supply of China-imported garlic has been low due to transport difficulty. The demand for locally-grown garlic has been high, and the price has been good despite the newly harvested crops. The price of China-imported garlic is from K8,000-K9,000 to K10,000 per viss,” said an official from the Monywa garlic trading centre. In the second week of February, the price of locally-grown garlic per viss dropped below K10,000 but rose again to K12,000-K13,000 due to high demand.

“The price dropped to around K8,000-K9,000 a viss on 10 February just for a day, but promptly climbed up again on the next day due to high demand,” he said. In the previous year, the garlic price stayed at the regular price of around K5,000 per viss, he said. — MT/ZS

# NATIONAL

## Rising inflation sends breakfast costs soaring

WITH the consumer price index skyrocketing, the prices for breakfast delicacies such as Monhinga (traditional fish rice noodle soup with add-ons), fried dough, bread, Naan and others have remarkably risen this year.

The high price of ingredients (wheat, egg, rice, oil and others) in making those foods prompted the sellers to hike up the price for breakfast foods.

The price is up by K300-K500, raising the high food burden on the households.

The egg price increased to K270 per piece in the last week of February from around K200 in November 2023, Ko Hla Win from South Okkalapa Township told The Global New Light of Myanmar (GNLM).

Similarly, the wheat price moved up to K155,000 per bag from K145,000, Ko Sein Win, a fried dough seller, said.

The retail price of sugar also went up to K4,300 per viss. Also, the flour price jumped to K5,200-5,400 from K4,800 per viss, Daw Aye Myint from Dala who sells a Chinese snack in Kyauktada Township, told the GNLM.

The price of the famous tradi-



The photo depicts a tea shop with customers enjoying breakfast.

tional breakfast Monhinga surged to K1,000-K3,000 per bowl of soup, depending on the shops and add-ons. The figures indicate an increase of K300-K500 in February 2024 compared to that of mid-2023.

As the kitchen grocery prices, including rice, fish, meat, and vegetables,

rocketed, some street stalls offering Myanmar curry with rice also raised the price of one meal to K3,000.

Ma Khine from Hlinethaya Township stressed that I am struggling with rising food costs and bus fares. I have to cut expenses to stay on budget. — TWA/EM

## YESC removes unofficial fibre and wi-fi cables

THE Yangon Electric Supply Corporation (YESC) is actively removing unauthorized fibre and wi-fi cables.

It has previously been announced that companies responsible for the unofficial cables on lampposts must remove them by their own arrangement.

However, fibre and wi-fi cables that have not been removed despite the announcement are being taken down by electrical engineers, staff, and employees from licensed telecom companies.

Unauthorized fibre and wi-fi cables were removed in Dagon Myothit (North), Kamayut, and Thakayta townships on 4, 20, and 24 February, respectively. — TWA/TRKM

## Warning: Sandbanks pose risks in Ayeyawady River near Mandalay, Mingun, Myinmu

THE Navigation Department of Mandalay Region has issued a warning regarding the formation of sandbanks in the Ayeyawady River near Mandalay, Mingun, and Myinmu. Vessels travelling from Mandalay Port to other cities are advised to navigate carefully to avoid running aground.

According to a statement from the Department of Meteorology and Hydrology (DMH) on 23 February, the water level of the Ayeyawady River in Mandalay has reached 242 centimetres, which is more than four feet be-

low the low water warning point of 360 centimetres.

In light of this, the department has advised cargo and passenger vessels travelling from Mandalay Port to Myinmu to be mindful of navigation marks set up by the Navigation Department of Mandalay Region.

The low water period of the Ayeyawady River typically occurs from 15 November to 15 May each year. During this time, vessels must navigate carefully along the navigable channel. — TWA/TKO



A vessel travelling from Mandalay's Mayanchan port to Mingun.

## Online passport booking now available in Nay Pyi Taw and three regions

STARTING from 26 February, an online booking system for passport applications will be operational in four regions, including Nay Pyi Taw.

The Myanmar Passport Office will introduce this system in its Mandalay, Patheingyi, Nay Pyi Taw, and Bago branch offices.

According to reports, passport issuance continues as usual, with the Yangon passport office serving approximately 2,700 individuals through the online booking system.

Furthermore, passport offices in Nay Pyi Taw, Myittha, Haka, Loikaw, Magway, Mandalay, Monywa, Taunggyi, Kengtung, Lashio, Tachilek, Hpa-an, Myawady, Mawlamyine, Dawei, Kawthoung, Patheingyi, Sittway, and Bago operate on regular working days.

Applicants planning to visit the Mandalay, Patheingyi, Nay Pyi Taw, and Bago branch offices must book appoint-



A long queue is seen to apply for a passport at the Mandalay Passport Issuing Office. **PHOTO - CJ**

ments online starting at 9 am from 25 February using KBZ Pay and MPU cards. However, they must also possess household registration forms from their respective state or region corresponding to the designated offices. Failure to present these documents will result in the unavailability of services, even with a con-

firmed booking. Additionally, applicants with appointment dates obtained through online booking must bring UID numbers verified by the immigration department.

Online booking can be accessed at [www.passport.gov.mm](http://www.passport.gov.mm), and payments can be made using KBZ Pay or MPU cards. — TWA/TMT



# Myanmar's pulse exports surge to US\$1.18B in 10.5 months

The value of Myanmar's pulses exports totalled over US\$1.47 billion from over 1.9 million tonnes in the previous FY 2022-2023.

## FROM PAGE-1

MYANMAR shipped nearly 1.4 million tonnes of pulses worth over US\$1.182 billion to foreign trade partners in the past ten and half months of the current 2023-2024 financial year beginning 1 April, the Ministry of Commerce's statistics showed.

Myanmar bagged \$1.06 billion from pulses exports of over 1.25 million tonnes through seaborne trade, while over 140,344 tonnes of pulses worth \$121.158 million were sent to the neighbouring countries through land borders between 1 April 2023 and 16 February 2024, totalling \$1.182 billion from exports of over 1,391,565 tonnes.

The value of Myanmar's pulses exports totalled over US\$1.47 billion from over 1.9 million tonnes in the previous FY 2022-2023, the Ministry of Commerce's statistics indicated.

Myanmar mainly exports black grams, green grams and pigeon peas to foreign markets. Of them, black grams and pigeon peas are primarily shipped to India, while green grams are exported to China and Europe.

India has growing demand and consumption requirements for black gram and pigeon peas. According to a Memorandum of Understanding between My-



Lorries are seen carrying containers laden with export cargoes at Yangon Port.

anmar and India signed on 18 June 2021, India will import 250,000 tonnes of black gram and 100,000 tonnes of pigeon peas (tur) from Myanmar for five consecutive years from 2021-2022 financial year to 2025-2026 FY. This G-to-G pact will not affect the pulses' annual quota set by India. Myanmar's exporters are also entitled to deliver the pulses to India under that yearly quota.

The prevailing market prices stand at K3.055 million per tonne of black gram (urad) and K3.77 million per tonne of pigeon pea (tur), according to figures from the Yangon Region Chambers of

Commerce and Industry (Bayintnaung Wholesale Centre).

The prices hit K3.5 million for black grams and K4.197 for pigeon peas on 5 February. Myanmar's black gram production is estimated at 400,000 tonnes, whereas about 50,000 tonnes of pigeon peas are annually produced. The Myanmar Pulses, Beans, Maize and Sesame Seeds Merchants Association stated that black grams, which India primarily purchases, are commonly cultivated only in Myanmar, whereas pigeon peas, green grams and chickpeas are grown in African countries and Australia. — NN/EM

THE wholesale reference rate of palm oil for the Yangon market is set a bit higher to K5,180 for this week ending 3 March from K5,140 per viss recorded in the past two weeks, according to the Supervisory Committee on edible oil import and distribution.

The figures reflected a slight increase of K40 per viss compared with that of the previous week.

The Supervisory Committee on Edible Oil Import and Distribution under the Ministry of Commerce has been closely observing the FOB prices in Malaysia and Indonesia, adding transport costs, tariffs and banking services to decide the wholesale market reference rate for edible oil on a weekly basis. However, the market price is higher than the reference price. To control overcharging, the Consumer Affairs Department under the Ministry of Commerce informed the consumers of lodging the complaints for overcharging through the call centre's hotline in late August. The Department urged consumers not to buy palm oil at high prices.

The Department is making concerted efforts to steer the high volatility in palm oil prices in the retail market and offer fairer prices to consumers in coordination with the Myanmar Edible Oil Dealers Association and oil importing companies.

The complaints for overcharging can be lodged over Hot Line: 1535 of the Call Centre of the Consumers Affairs Department or sent to the Facebook Page of the Department

## Yangon palm oil wholesale price inches up this week ending 3 March



Palm oil seen being organized for sale in the market.

and the region and state departments concerned.

The domestic consumption of palm oil is estimated at one million tonnes per year. The local palm oil production is just about 400,000 tonnes. About 700,000 tonnes of palm oil are imported yearly through Malaysia and Indonesia to meet domestic demands. — NN/EM

## Traders eye domestic market amid export loss

FRUIT traders are facing losses while exporting watermelons to China, prompting them to turn to the domestic market.

Transportation on rough roads affected the quality of the watermelons. Therefore, there is no chance to earn a higher price.

"The price for the 855-watermelon variety is unlikely to rise. Extreme weather and transportation on rough roads damaged watermelon's quality. There are transport hurdles on the Kengtung, Mongla and Bhamo channels. Therefore, the traders started to eye the domestic market. The prevailing export price cannot cover transport and other general costs. The duty fee at the border post is 35,000-40,000 yuan per truck of watermelon," traders elaborated.

The traders suggested the suppliers observe market conditions depending on supply and demand factors.

"The quality loss leads to export loss. The transport hurdles, suspension at borders, and extreme weather on China's side are contributing factors to the inferior quality. Another factor is the change in consumer behaviour owing to the economic crisis of the coronavirus pandemic," said a trader.

Of 100 watermelon trucks heading to China, only ten can cover the freight cost. The traders struggled with two to three-digit losses. At present, watermelon and muskmelons are mostly delivered to China through the Lweje and Mongla road channels.

Myanmar's watermelon is primarily exported to China. However, fruit traders emphasized that they are facing prolonged challenges amid the policy changes in China.

In early February last year, tight inspections by Chinese Customs hindered truck transport. That is why only 20-30 trucks were able to pass the checkpoint despite high demand.

Consequently, watermelon was sold out at the depots on the Chinese side, and more than 500 trucks queued in line on the Myanmar side.

In 2021, the COVID-19 restrictions hindered Myanmar's watermelon and muskmelon exports to China. Chinese Customs Regulation increased delay. Long delays of trucks caused harm to watermelon quality, and only one in five trucks heading to China remained undamaged with quality watermelons.

The traders need to consider delivery time, price and profitability, as watermelon is a perishable fruit while trying to explore new markets beyond China. — NN/EM



# OPINION

## Efficiently utilize long school summer holidays

AS the academic year draws to a close, basic education schools are gearing up for examinations across various levels. Primary, middle, and high school students have demonstrated their learning prowess and absorbed the knowledge imparted by their teachers through these assessments.

The academic cycle typically commences in June and concludes in February or March after the rigorous examination period. Throughout the academic journey, students grapple with the challenges posed by various subjects, overcoming hurdles during their schooling days. Despite the hardships, when the examination time arrives, students can temporarily set aside their fatigue, focusing solely on the evaluation process.

Post-examinations, students find themselves at a juncture where daily life concerns temporarily recede. Instead, their attention shifts to planning for future academic years. As they sit for examinations, they concurrently strategize for the next grade, requiring active involvement from both parents and teachers to ensure a smooth transition without losing sight of their educational goals.

The break offers a window to participate in summer sports training, language courses, technological workshops, traditional ceremonies, vocational courses, and family trips as well as supporting family businesses. In this non-academic period, children can broaden their perspectives, discerning between right and wrong in the world around them. Every event and activity should contribute positively to their lives, allowing them to momentarily set aside life's pressures and avoid succumbing to depression. Such experiences enhance both their physical and mental well-being, fostering maturity in line with their age.

The ensuing long summer holidays present an opportunity for Myanmar's children to engage in a variety of activities. These may include religious ceremonies like novitiation and nunnery ceremonies, as well as other societal events. Some children diligently follow their parents' plans, initiating early learning, while others embark on family-organized trips. Regardless of the chosen path, children must be proactive in effectively utilizing their summer break.

The break offers a window to participate in summer sports training, language courses, technological workshops, traditional ceremonies, vocational courses, and family trips as well as supporting family businesses. In this non-academic period, children can broaden their perspectives, discerning between right and wrong in the world around them. Every event and activity should contribute positively to their lives, allowing them to momentarily set aside life's pressures and avoid succumbing to depression. Such experiences enhance both their physical and mental well-being, fostering maturity in line with their age.

Given the fatigue accumulated during the academic year, the summer holidays provide a crucial opportunity for students to rejuvenate both physically and mentally. This rejuvenation ensures they enter the new academic year, typically commencing in early June, with a fresh mindset. A renewed vigour and mental clarity enable students to approach school lessons and knowledge with greater enthusiasm, thereby enhancing their qualifications for the challenges that lie ahead. As summer comes to an end, students must be mindful that a new academic year eagerly awaits their return.

# The Significance of Super Speciality Medical Care

By Dr Than Lwin Tun

ACCORDING to one of the objectives of the Social Affairs of State Administration Council (SAC); "To elevate the Health and Sports sectors inclusive of all the people, improving the longevity and health of the nation", the Ministry of Health, Myanmar, laid down the two objectives, to enable every citizen to attain full life expectancy and enjoy longevity of life, and to ensure that every citizen is free from diseases. To do that, the Ministry of Health is conducting super speciality medical care to the districts, states and regions.

The super speciality medical care plays a crucial role in providing patients with comprehensive and targeted treatment for a wide range of health conditions. It is also important in healthcare systems worldwide due to several significant factors. In this article, we would like to mention the significance of super-speciality medical care and how it contributes to the overall well-being of patients.

**Expertise and Specialization:** Super speciality medical care focuses on highly specialized areas of medicine, such as neurology, cardiology, oncology, etc. Physicians and healthcare providers in these fields undergo extensive training and gain deep expertise in diagnosing and treating complex medical conditions within their special-



Performing CT during super-speciality tour

ized domain. **Advanced Technology and Techniques:** Super-speciality medical care often involves the use of cutting-edge medical technologies, equipment, and techniques. This includes advanced diagnostic tools like Magnetic Resonance Imaging (MRI), Computed Tomography (CT) scans, Position Emission Tomography (PET) scans and Ultrasonography (USG) as well as sophisticated surgical procedures such as robotic

surgery, minimally invasive surgery, and organ transplants. These advancements can lead to better outcomes, shorter recovery times, and improved quality of life for patients.

**Early Detection and Intervention:** Speciality medical care plays a vital role in early detection and intervention for certain diseases. Specialists are trained to recognize subtle signs and symptoms of conditions within their area



USG examination of the patient during the super-speciality tour

of expertise, enabling them to diagnose diseases in their early stages when treatment is most effective.

**Complex and Rare Conditions:** Super speciality medical care is typically sought for conditions that are complex, rare, or require highly specialized treatment approaches. Examples include certain types of cancers, neurological disorders, congenital heart defects, and rare genetic diseases. Super-speciality centres

often have the expertise and resources needed to manage these challenging cases effectively.

**Personalized Treatment Plan:** It supports better equipped to develop personalized treatment plans tailored to the individual needs of each patient. They consider factors such as the patient's medical history, genetic predispositions, lifestyle, and preferences when designing treatment strategies, leading to more

effective and patient-centred care.

**Multidisciplinary Approach:** Many super-speciality medical centres employ a multidisciplinary approach to patient care. This means that healthcare providers from different specialties collaborate closely to develop comprehensive treatment plans tailored to each patient's unique needs. This approach can lead to better coordination of care, improved communication among health-

care teams, and ultimately, better patient outcomes.

**Improved Outcomes:** Specialized medical care often leads to better health outcomes for patients. Specialists have a deeper understanding of particular diseases or conditions, allowing them to develop targeted treatment plans that may result in faster recovery times, reduced complications, and improved quality of life for patients.

**Reduced Healthcare Cost:** it can ultimately lead to cost savings by preventing complications, reducing hospital admissions, and improving overall health outcomes. By addressing medical issues early and effectively, speciality care can help mitigate the long-term financial burden associated with untreated or poorly managed conditions.

**Research and Innovation:** Super-speciality medical centres are often at the forefront of medical research and innovation. They conduct clinical trials, pioneer new treatments and therapies, and contribute to the advancement of medical knowledge in their respective fields. This continuous cycle of research and innovation drives improvements in patient care and helps address unmet medical needs.

**Regional and Global Healthcare:** Super speciality medical centres often serve as regional or even global healthcare hubs, attracting patients from across the country or around the world seeking specialized care. This can have significant economic implications for the region, as medical tourism brings in revenue from patients travelling for treatment, as well as opportunities for collaboration and knowledge exchange with international healthcare providers.

Meanwhile, the Ministry of Health conducted 15 times super speciality medical care during 2023 and eight times in 2024. The next super speciality medical care is planned to be conducted in the coming period.

In addition, super-speciality medical care is significant because it provides expertise, advanced technology, and specialized treatments for complex and rare conditions, employs a multidisciplinary approach to patient care, drives research and innovation, and serves as regional or global healthcare as well as drives advancements in medical knowledge and technology and reducing healthcare costs. Its availability and effectiveness contribute significantly to the overall health and well-being of the public.

## WHO calls to enhance field epidemiology workforce in South-East Asia Region

The World Health Organization and member countries in the South-East Asia Region are prioritizing the enhancement of the field epidemiology workforce to strengthen response capacities for health emergencies.

THE World Health Organization and member countries in South-East Asia Region on Friday called for enhancing field epidemiology workforce as part of strengthening capacities to respond to health emergencies, WHO said in a news release.

"One of the lessons from COVID-19 pandemic is that field epidemiology workforce is a critical component of national health security systems. Continued ef-

forts are needed to invest in field epidemiology capacity strengthening," said Saima Wazed, Regional Director, WHO South-East Asia, in her message to the three-day 'Regional Consultation: Advancing field epidemiology capacities in the WHO South-East Asia Region' held here this week.

During COVID-19 pandemic field epidemiologists were engaged in various roles such as coordination, planning, monitor-

ing, surveillance, contact tracing, case investigations etc.

According to the release, "Whether in disease outbreaks such as dengue, influenza, Nipah, measles, foodborne diseases etc or in the aftermath of natural calamities like earthquakes, cyclones and floods, field epidemiologists have been playing an important role in surveillance, risk assessment and response. Having a health workforce prepared and

qualified with field epidemiology training programmes (FETP) strengthens a country's ability to surge and respond to future events."

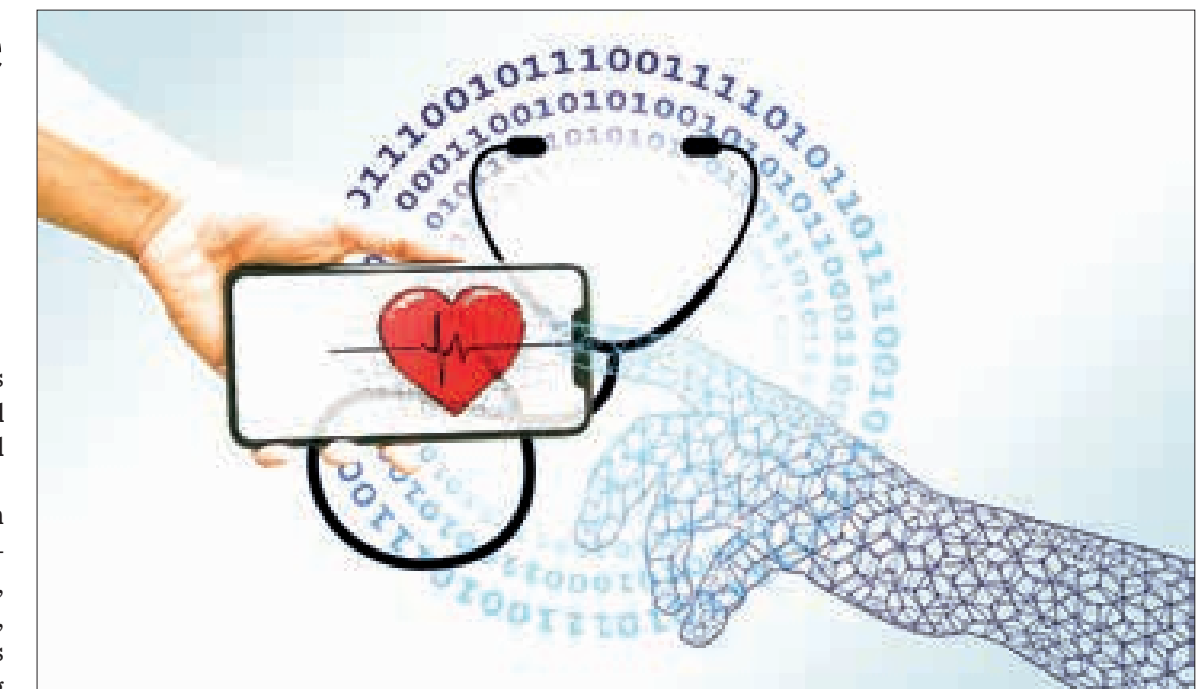
The landscape surrounding FETP is evolving with emerging demands in areas of zoonotic diseases, antimicrobial resistance, genomics and non-communicable diseases.

Additionally, there are emerging new technologies which re-

quires new scope of competencies such as data science, advanced analytics, and environmental and waste-water surveillance.

The three-day consultation from 20 to 22 February was, attended by ministries of health, technical agencies and partners, reviewed the progress, lessons and challenges in strengthening field epidemiology capacities in the Region.

Source: ANI



During COVID-19 pandemic field epidemiologists were engaged in various roles such as coordination, planning, monitoring, surveillance, contact tracing, case investigations etc. PHOTO: ILLUSTRATION: PIX FOR VISUAL PURPOSE/PIXABAY



# SCI/ENVIRON WORLD

## Japan's Moon explorer resumes communication after harsh lunar night

A Japanese explorer that recently landed on the Moon has resumed communication with Earth, the country's space agency said Monday, revealing that the craft has unexpectedly survived the freezing lunar night after a period of dormancy.

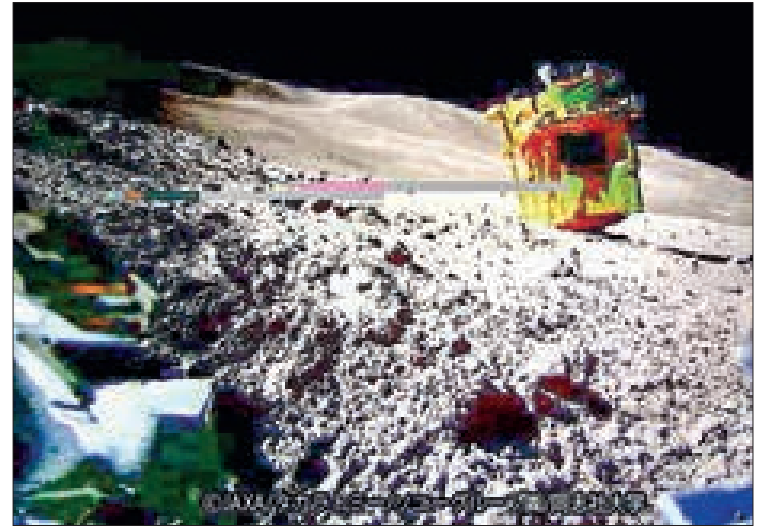
"Last night, a command was sent to SLIM and a response received," the mission's team said in a post on X, referring to the Smart Lander for Investigating Moon. The team had previously indicated that SLIM was not designed to endure the frigid lunar night, which lasts for around two

weeks with temperatures plummeting to minus 170 Celsius.

The move indicates that SLIM's solar panels are now receiving sunlight, allowing it to generate power. The team said in another post that communication with SLIM was terminated "after a short time, as it was still lunar midday and the temperature of the communication equipment was very high".

According to the Japan Aerospace Exploration Agency, data was received after 7 pm on Sunday, allowing it to confirm that SLIM is at least functioning. But

the temperature of some of its equipment has risen to above 100 C due to sunlight. Once the temperatures cool down, JAXA plans to confirm SLIM's functionality, including that of a camera capable of observing minerals on the Moon. Japan landed the explorer on 20 January, becoming the fifth country to achieve the feat after the former Soviet Union, the United States, China and India. SLIM touched down around 55 meters from its target site, accomplishing JAXA's mission to land it with unprecedented precision. — Kyodo



(FILES) This handout photo released on 25 January 2024 from the Japan Aerospace Exploration Agency (JAXA) and credited to JAXA, Takara Tomy, Sony Group Corporation and Doshisha University shows an image of the lunar surface taken and transmitted by LEV-2 "SORA-Q" the transformable lunar surface robot "SORA-Q" (operation verification model), installed on the private company's lunar module for the Smart Lander for Investigating Moon (SLIM) mission, after landing on the Moon on 20 January. Japan's Moon lander has produced another surprise by waking up after the two-week lunar night, the country's space agency said on 26 February 2024. **PHOTO: HANDOUT / JAPAN AEROSPACE EXPLORATION AGENCY (JAXA) / TAKARA TOMY / SONY GROUP / DOSHISHA UNIVERSITY / AFP**

## Chinese observatory's new discovery, a step closer to solving cosmic ray enigma



Cao Zhen, principal investigator of Large High Altitude Air Shower Observatory (LHAASO) and an academician of Chinese Academy of Sciences (CAS), introduces research findings at the Institute of High Energy Physics of CAS, in Beijing, capital of China, 22 February 2024. **PHOTO: XINHUA**

CHINA'S cosmic ray observatory has discovered a giant ultra-high-energy gamma-ray bubble structure, about ten million times larger than our solar system, in the Cygnus star-forming region, around 5,000 light years from Earth.

Based on the observations made by China's Large High Altitude Air Shower Observatory (LHAASO), scientists identified that star-forming region as one source of the cosmic rays in the Milky Way with an energy level higher

than 10 peta-electron volts (quadrillion electron volts or PeV), about 1,000 times more than the record high achieved by any manmade accelerator on Earth.

"This is the first super cosmic ray accelerator identified as of now. With increasing observation time, LHAASO is expected to detect more super cosmic ray accelerators, and hopefully solve the mystery behind the origins of cosmic rays in the Milky Way," said Cao Zhen, principal investiga-

tor of LHAASO and an academician of Chinese Academy of Sciences (CAS).

The discovery was published in the academic journal Science Bulletin on Monday.

Cosmic rays are charged particles from outer space, mainly composed of protons. The origin of cosmic rays is one of the most important frontier issues in modern astrophysics.

Measurements of cosmic rays in past decades have revealed a break around 1 PeV in the energy spectrum, which is called the "knee" of the cosmic ray energy spectrum due to its shape resembling a knee joint. However, the origin of cosmic rays in the "knee" region is still an unsolved mystery and one of the most intriguing topics in cosmic ray research in recent years, said Cao.

LHAASO has discovered a giant ultra-high-energy gamma-ray bubble structure in the Cygnus star-forming region, with multiple photons exceeding 1 PeV inside the structure, with the highest energy reaching 2.5 PeV, said Yang Ruizhi, a key member of the research team. — Xinhua

## 2 million animals dead as extreme winter weather hits Mongolia

MORE than two million animals have died in Mongolia so far this winter, a government official said Monday, as the country endures extreme cold and snow.

The landlocked country is no stranger to severe weather from December to March, when temperatures plummet as low as minus 50 degrees Celsius (minus 58 Fahrenheit) in some areas.

But this winter has been more severe than usual, with lower than normal temperatures and very heavy snowfall, the United Nations said in a recent report.

As of Monday, 2.1 million

head of livestock had died from starvation and exhaustion, Gantulga Batsaikhan of the country's agriculture ministry said.

Mongolia had 64.7 million such animals, including sheep, goats, horses and cows, at the end of 2023, official statistics show.

The extreme weather is known as "dzud" and typically results in the deaths of huge numbers of livestock.

The United Nations said climate change is increasing the frequency and intensity of dzuds. — AFP



This picture taken on 22 February 2024 shows a goat standing next to a traditional yurt tent amid extremely cold weather conditions in Bayanmunkh, in Mongolia's Khentii Province. Over two million livestock have now died in Mongolia this winter, an official said on 26 February, victims of the "dzud" extreme weather phenomenon that the UN has said put 90 per cent of the country at risk. **PHOTO: AFP**



## Projection mapping at Tokyo govt HQ recognized as world's biggest

A nightly projection mapping display that debuted Sunday at the Tokyo metropolitan government's headquarters building was recognized as the largest of its kind in the world by Guinness World Records.

The free year-round shows, titled "Tokyo Night & Light", are expected to draw tourists and locals, with images projected on the eastern facade of the complex's 48-storey Main Building No 1, roughly 14,000 square metres from the building's fourth to 32nd floors.

"An incredible art will be performed on the canvas of the government building. I hope to make this a new landmark spot," said Tokyo

Governor Yuriko Koike.

Mayumi Oda, 52, from Uji, Kyoto Prefecture, said, "The display, taking advantage of the big building, was something both children and adults could enjoy," as she attended the opening-night event with her husband, who works in Tokyo.

"I want to come back and see this again," she said.

Under the current schedule through April, five shows are held from 7 pm. Different displays will be projected on weekends and holidays, according to the local government.

The show mainly uses electricity generated by solar power. — Kyodo

Nightly projection mapping displays begin on one of the two towers that host the headquarters of the Tokyo metropolitan government on 25 February 2024. Images projected on the eastern facade of the complex's 48-storey main building No 1, covering an area measuring some 127 metres in height and 110 metres in width from the building's fourth to 32nd floors, have been certified as the world's largest by Guinness World Records. **PHOTO: KYODO**

## New museum building opens at China's Shang Dynasty capital archaeological site

A new building of the Yinxu Museum in Anyang County, central China's Henan Province, officially opened to the public on Monday.

Located near the archaeological site of the Yin Ruins, which is the location of the last capital of the Shang Dynasty (1600 BC-1046 BC), the expanded Yinxu Museum is the first national major archaeological museum to comprehensively present the Shang civilization.

The new building boasts an exhibition area of 22,000 square metres, where nearly 4,000 items or sets of cultural relics, including bronzeware, pottery, jade objects, and oracle bones, are on display.

About three-fourth of these relics are being exhibited for the first time to the public, along with multiple new achievements reached in relevant archaeological endeavours.

Visitors to the museum can purchase tickets through the Yinxu Museum official website as well as the museum and the Yinxu scenic area's WeChat public accounts.

The museum's old building was constructed in 2005. As archaeological work at the Yin Ruins continued to yield results, the building's mere 1,500-square-metre exhibition area became insufficient to effectively conserve and showcase the relics. This sparked the planning of the new building, and its construction began in November 2020.

The Yin Ruins is the first documented late Shang Dynasty capital site in China, as confirmed by archaeological excavations and oracle bone inscriptions. — Xinhua



Visitor view exhibits at the new building of Yinxu Museum in Anyang, central China's Henan Province, 26 February 2024. A new building of the Yinxu Museum in Anyang officially opened to the public on Monday. **PHOTO: XINHUA**

## Hotels, flights booked out as 'Swift effect' hits Singapore

THE "Swift effect" is about to hit Southeast Asia but Singapore has left some of its neighbours seeing red while it profits from a Taylor-made tourism boom as the star's only stop in the region.

More than 300,000 fans from the city-state and neighbouring countries will attend the US superstar's six sold-out Eras Tour shows at the National Stadium from 2-9 March.

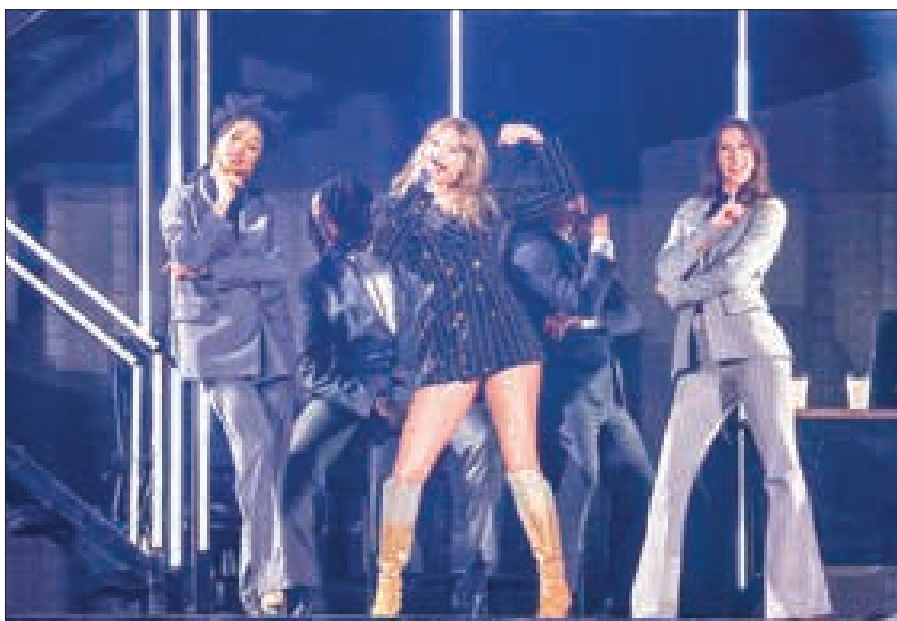
Ingrid Delgado, a fresh graduate in Manila who is travelling to Singapore for the 4 March show, said she bought a "new shimmering dress" for the occasion but had trouble finding an affordable hotel.

"A lot were booked already, so I had to book a more expensive hotel," she said.

The Fullerton Hotels and Resorts, as well as the Fairmont Hotel, told AFP that demand for rooms during the concert period had risen.

Big spenders have taken up Marina Bay Sands' luxury packages named after Swift's hit songs, such as "Shake it Off" and "Stay Stay Stay".

The hotel's SG\$50,000 (\$37,230) "Wildest Dreams" package includes VIP tickets, fine dining, a hotel suite, limousine transfers and passes to tourist attractions.



US singer Taylor Swift performs on stage during a concert as part of her Eras World Tour in Sydney on 23 February 2024. **PHOTO: AFP**

The hotel told AFP all its packages were sold out.

Singapore Airlines and Malaysia Airlines said there had been increased demand for Singapore-bound flights but could not say whether it was solely due to the "Swift Effect".

A large contingent of Malaysian Swifties will be crossing into neighbouring Singapore.

"It's a dream come true. I feel

excited and nervous," said Harith Arsat, a 20-year-old student who will be making his first overseas trip from Kuala Lumpur.

In the Philippines, budget carrier Cebu Pacific has changed its usual flight number for Singapore-bound planes to "1989" — the year Swift was born and the title of her fifth album — for the 1-9 March period. — AFP



# ECONOMY WORLD

## Nikkei stock index ends at all-time high for 2<sup>nd</sup> day in row

THE Nikkei stock index closed at an all-time high Monday for the second consecutive trading day, as buying momentum was supported by expectations for robust corporate performance.

The 225-issue Nikkei Stock Average ended up 135.03 points, or 0.35 per cent, from Thursday at 39,233.71. The broader Topix index finished 12.91 points, or 0.49 per cent, higher at 2,673.62, its highest level since February 1990. Japanese markets were closed Friday for a public holiday.

On the top-tier Prime Market, gainers were led by pharmaceutical, precision instrument and bank shares.

The US dollar remained mostly unchanged at the mid-150 yen level in Tokyo amid a lack of fresh trading cues.

At 5 pm, the US dollar fetched 150.46-47 yen compared with 150.49-59 yen in New York at 5 pm Friday.

The euro was quoted at \$1.0832-0833 and 162.98-163.02



A stock monitor in Tokyo shows the 225-issue Nikkei Stock Average ending at a new all-time high of 39,233.71 on 26 February 2024. PHOTO: KYODO

yen against \$1.0816-0826 and 162.81-91 yen in New York late Friday afternoon.

The yield on the benchmark 10-year Japanese government bond fell 0.030 percentage point

from Thursday's close to 0.685 per cent, tracking a fall in long-term US Treasury yields late last week.

On the stock market, a wide range of issues drew buying on

optimism for upbeat earnings by Japanese companies, propelling the Nikkei index to refresh both its closing and intraday highs for the second straight trading day. The benchmark index sur-

passed the previous records set Thursday for the first time since December 1989.

"Japanese stocks are seen as cheap, with the added advantage of a weak yen. And low interest rates, inflation, and relatively cheap valuations make Japanese stocks even more attractive to foreign investors," said Seiichi Suzuki, chief equity market analyst at the Tokai Tokyo Research Institute.

But the upside was capped on Monday, as the selling of Tokyo Electron and other semiconductor-related stocks that surged last week on US chip giant Nvidia Corp's positive earnings and outlook led to a slight market correction, Suzuki said.

"Whether it is due to caution over recent rises or profit-taking, it seems like there weren't as many buyers today as there were last week," he said, adding that investors are also keeping an eye on key US economic indicators due out later this week. — Kyodo

## China's foldable smartphone market sees expansion in 2023

SHIPMENTS of foldable smartphones in the Chinese market surged 114.5 per cent in 2023 over the previous year, an industry report showed.

Shipment volume of such phones exceeded seven million units last year, marking a year-

on-year increase of over 100 per cent for four consecutive years, according to the report by global market research firm International Data Corporation.

The report attributed the breakout growth to improved

consumer experience and a further decline in prices.

In 2023, foldable smartphones costing 1,000 US dollars or more took 66.5 per cent of the market share, down from 81 per cent registered in 2022. — Xinhua



People try foldable phones at the booth of Chinese company Honor during the IFA 2023 in Berlin, capital of Germany, on 1 September 2023. PHOTO: XINHUA

## China's COMAC aeroplanes arrive in Viet Nam for airshow

CHINESE aeroplanes C919 and ARJ21 developed by the Commercial Aircraft Corporation of China Ltd (COMAC) arrived in Viet Nam's Van Don International Airport in the northern Quang Ninh province on Monday for an airshow, Vietnam News Agency reported.

The show is scheduled to take place from Monday to Thursday.

The two jetliners flew from Singapore to Viet Nam after finishing the Singapore Airshow 2024 where they made their first airshow appearances outside China, local media reported.

ARJ21-700 is a twin-engine jet with a maximum of 90 seats while the C919 is a narrow-body passenger aircraft with a maximum capacity of 192 seats.

Visitors to the COMAC airshow in Viet Nam will have

chances to explore the jetliners inside.

Hoang Van Dung, deputy director of Van Don International Airport, said the COMAC airshow would help enable the operation of commercial flights from Chinese provinces and cities to Van Don, firstly from Shantou city of China's Guangdong Province.

The show is expected to promote tourism cooperation between Quang Ninh province and China's key markets, and at the same time, encourage airlines to launch flights and travel agencies to launch tourism packages to Van Don International Airport, he said.

According to local media, C919 and ARJ21-700 will fly to Viet Nam's central Da Nang city, southern Ho Chi Minh City and Laos' capital Vientiane after the show in Quang Ninh. — Xinhua

# German companies not buying “de-risking” sermon



This photo taken on 13 April 2023 shows a German-made Hobby Recreational Vehicle (Hobby RV) at the third China International Consumer Products Expo (CICPE) in Haikou, south China’s Hainan Province. **PHOTO: XINHUA**

ANY increased protectionist measures against China by the European Union will have a damaging impact on economies such as Europe, said Ola Kallenius, chairman of the board of management of Mercedes-Benz Group, when releasing the com-

pany’s quarterly results. Kallenius’s comments echo those of a wide range of German and European businesses. Judging from a series of reports and data released recently by the German government, think tanks and cham-

ber of commerce, China-Germany investment cooperation has not been affected by the “de-risking” sermon. While some politicians in the United States and some other Western countries are clamouring for “de-risking” in China,

German companies are continuing to increase investment in China and tap into the Chinese market.

The German Economic Institute recently pointed out in a report based on data from the German central bank that in 2023, direct investment from Germany to China reached a record high of 11.9 billion euros (12.9 billion US dollars), increasing by 4.3 per cent compared to the previous year. According to the report, German companies’ investment in China over the past three years roughly equalled the amount from 2015 to 2020. Additionally, in 2023, Germany’s investment in China accounted for 10.3 per cent of its total overseas investment, the highest level since 2014. — Xinhua

# Analysts remain cautious on Malaysia’s auto sales this year

ANALYSTS remain cautious on Malaysia’s auto sales this year despite the country’s car sales rising year on year in January.

TA Securities said in a note on Monday that it expects total industry volume (TIV) in Malaysia to be lower in February, attributable to seasonal factors such as shorter working month due to the Chinese New Year holidays. After another record-breaking year in 2023, the research house expects the automotive sector to normalize in 2024 and register a weaker TIV of 650,000 units (-18.7 per cent year on year) due to the absence of tax incentives and depleting order book.

The potential high-value goods tax is expected to pose some downside risks to Malaysia’s automotive sector, according to TA.

Meanwhile, RHB Investment Bank Research said that a strong TIV number in January is expected, as carmakers continue to offload their order backlogs.

The research house anticipates first quarter to chart stronger year-on-year TIV, supported by

the high order backlogs carried forward from last year, which it believes are unsustainable.

It expects 2024 TIV to soften to 625,000 units (-22 per cent year on year) given the lack of catalysts that could drive sales to another high.

“Current TIV level is unlikely to be sustained as major marques such as Perodua and Toyota have seen declines in their order backlogs,” it said.

With January TIV making up nine per cent of its full-year projection of 710,000 units (-11 per cent year on year), Kenanga Research considered the number meeting its expectation.

The research house said in a note that its full-year projection is a tad lower than the 740,000 units projected by Malaysia Automotive Association (MAA).

“We hold the view that the impending fuel subsidy rationalization will likely hurt the demand for mid-market models, while remaining optimistic on the sales of affordable vehicles,” it said. — Xinhua

# Singapore’s manufacturing output up 1.1% in January

SINGAPORE’S manufacturing production increased 1.1 per cent year on year in January, according to data released by the Economic Development Board Monday.

Transport engineering production increased 43.5 per cent year on year in January, mainly led by a 69.1-per-cent growth

in the aerospace segment and a 27.6-per-cent growth in the marine and offshore engineering segment.

Biomedical manu-

facturing output declined 25.9-per-cent in January due to a 43.7-per-cent drop in pharmaceutical production. — Xinhua

## CLAIMS DAY NOTICE

M.V MCC SHENZHEN VOY.NO. (406W)

Consignees of cargo carried on **M.V MCC SHENZHEN VOY.NO. (406W)** are hereby notified that the vessel will be arriving on **26-2-2024** and cargo will be discharged into the premises of **MITT/MIP** where it will lie at the consignee’s risk and expenses and subject to the byelaws and conditions of the Port of Yangon.

Damaged cargo will be surveyed daily from 8 am to 11:20 am and 12 noon to 4 pm to Claim’s Day now declared as the third day after final discharge of cargo from the Vessel.

No claims against this vessel will be admitted after the Claims Day.

Phone No: **2301185**

Shipping Agency Department  
Myanma Port Authority

Agent For:

**M/S SEALAND MAERSK ASIA PTE., LTD.**

## CLAIMS DAY NOTICE

M.V ISEACO WISDOM VOY.NO. (111N)

Consignees of cargo carried on **M.V ISEACO WISDOM VOY.NO. (111N)** are hereby notified that the vessel will be arriving on **27-2-2024** and cargo will be discharged into the premises of **AWPT** where it will lie at the consignee’s risk and expenses and subject to the byelaws and conditions of the Port of Yangon.

Damaged cargo will be surveyed daily from 8 am to 11:20 am and 12 noon to 4 pm to Claim’s Day now declared as the third day after final discharge of cargo from the Vessel.

No claims against this vessel will be admitted after the Claims Day.

Phone No: **2301185**

Shipping Agency Department  
Myanma Port Authority

Agent For:

**M/S NEW GOLDEN SEA LINES**

## NOTICE

The Election of New Appointment Committee (2024) of The Hindu Temple Sri Sri DURGA BARI, NO 307, Bo Aung Kyaw Street, Yangon, will be held on 24<sup>th</sup> March, 2024 (Sunday) 9:00 AM to 2:00 PM at the said Temple Hall.

Interesting Candidates seeking for any information and obtaining/ submitting NOMINATION FORMS in due course as prescribed rules and regulations announced on the notice posted since 14<sup>th</sup> February 2024 at the Temple.

Election Commission (2024)  
Hindu Temple Sri Sri DURGA BARI

**Advertise**  
with us/ Hot Line :

**09251022355,**  
**09255597511**



# ROLLING UPDATES

## WORLD

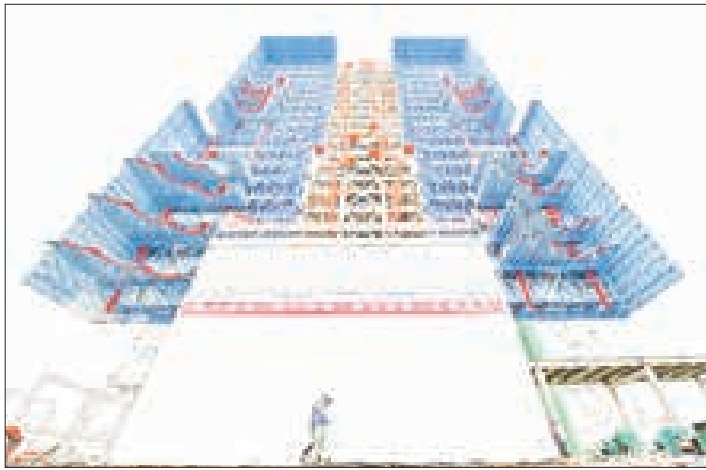
## China to make about 100 space launches in 2024

CHINA is projected to make about 100 space launch missions this year, which will set the country's new record, according to information released at a press conference on Monday.

The launches include the maiden flight from China's first commercial spacecraft launch site in addition to more satellite liftoffs to form constellations, according to the press conference.

China's first commercial spacecraft launch site is now under construction in the city of Wenchang, in south China's island province of Hainan.

China Aerospace Science and Technology Corporation



Staff members walk by the No 1 launch pad of Hainan commercial spacecraft launch site in Wenchang, south China's Hainan Province, 29 December 2023. **PHOTO: XINHUA**

(CASC), the country's rocket series developer and the leading force of the country's space industry, released the

2023 blue book of China aerospace science and technology at the same press conference. — Xinhua

## Tractors throng Brussels as ministers meet on farm rules

HUNDREDS of tractors thronged streets around the EU's headquarters in Brussels on Monday as ministers met to seek ways to streamline farming rules and red tape fuelling protests around the bloc.

Police estimated that 900 tractors were clogging the European quarter of the Belgian capital — targeted for the second time in a month — with officers firing water cannon as farmers burned tyres and set off fireworks in the street.

Farmers from Spain, Portugal and Italy joined their Belgian counterparts for the latest show of force in the Europe-wide movement spurred by what they see as excessive EU environmental requirements and un-

fairly cheap imports.

Elsewhere thousands of Spanish farmers protested outside the agriculture ministry in central Madrid on Monday, holding placards that read: "The countryside is in the abyss and the government doesn't care."

Maria Villoslada Garcia, a 43-year-old winegrower from northern Spain, told AFP: "We expect solutions, but quickly" from the EU and Spain "because we are being suffocated" and "our work costs more than what it pays."

Victor Iglesias, a 24-year-old grain farmer from central Spain, said: "There are fewer and fewer young people (in the profession) and that's a consequence of... the costs." — AFP



Commune councillors line up to vote at a polling station during the Senate election in Takhmao city, Kandal province, on 25 February 2024. **PHOTO: AFP**

## Cambodia's ruling party wins 55 out of 58 seats in Senate election: PM

THE ruling Cambodian People's Party (CPP) won 55 out of the 58 Senate seats up for grabs in the Sunday's election, the country's Prime Minister Hun Manet said on Monday.

Four political parties, the CPP, the Khmer Will Party, the Nation Power Party and the royalist Funcinpec Party, participated in the Senate election for the fifth legislative term.

National Election Committee (NEC) preliminary results indicated that the CPP received 10,052 votes, the Khmer Will Party earned 1,394 votes, the Nation Power Party gained 234 votes, and the Funcinpec Party got 19 votes.

Hun Manet, who is also the CPP's vice-president, said in a text released in his official Telegram channel that based on the NEC results, the CPP won 55 seats and the Khmer Will Party gained three seats, as the Nation Power Party and the Funcinpec Party did not earn any seat.

CPP spokesperson Sok Eysan confirmed on Sunday that former Prime Minister Samdech Techo Hun Sen, the 71-year-old president of the CPP, will take over as the president of the Senate after the election, allowing him to act as the acting head of state when the king is overseas. — Xinhua

## Trump defeats Haley in her home state, but Haley vows to head into Super Tuesday

FORMER US President Donald Trump on Saturday secured victory over Nikki Haley, his former ambassador to the United Nations, in South Carolina's Republican primary, advancing a step closer to a potential face-off with incumbent Joe Biden in the upcoming presidential election in November.

Despite her aspirations to regain momentum after three losses in Iowa, New Hampshire and Nevada, Haley — South Carolina's first female governor from 2011 to 2017 — got roughly 40 per cent of the vote, trailing Trump by approximately 20 percentage points.

As Trump and Haley traverse the primary landscape, vying for the Republican presidential nomination state by state, Trump's firm hold on a significant faction of the party is evident.

However, he remains embroiled in controversies surrounding his efforts to overturn the 2020 US presidential election results and his alleged role in inciting the 6 January Capitol Riot.

Meanwhile, despite grow-



Voters cast their ballots at a polling station during the South Carolina Democratic presidential primary in Charleston, South Carolina, the United States, 3 February 2024. **PHOTO: XINHUA**

ing inner-party pressure to drop out and allow Republicans to unite around Trump, Haley vowed she was "not giving up this fight".

"We're getting around 40 per cent of the vote. That's about what we got in New Hampshire, too. I'm an accountant. I know 40 per cent is not 50 per cent. But I also know 40 per cent is not some tiny group," Haley told supporters in her election-night remarks.

"In the next 10 days, another 21 states and territories will speak," she said. Her next

station is Michigan, and then Super Tuesday on 5 March, when 15 states and one territory will vote to choose candidates to compete in the general elections.

Trump, who has swept all the early states, has contended that the Republican primary election was effectively over. "This was a little sooner than we anticipated," he said in his victory speech in Columbia in South Carolina, adding that he had "never seen the Republican Party so unified as it is right now." — Xinhua

# SPORTS

## YRG team keeps winning streak in MFF-Futsal League II

THE Week-15 matches of the Myanmar Football Federation (MFF) Futsal League-II tournament continued yesterday at the MFF Futsal Stadium. The YRG team is standing atop the standing table after defeating the Golden Yoma team with a score of 2-1.

At the Week-15 matches, the YRG team beat the Golden Yoma team 2-1, The Black Cross team defeated Team TG United 3-2, the SGF team crushed the Shwepyitha team 6-4 while Team KKY smashed the Maya team 5-3, the Noka United team beat the Seven team 3-2, and Team Sun Far played 6-4 against Team M-Million.

After the Week-15 matches, Team YRG stood at the top of the table with 35 points. The TG United team garnered 31 points for second



The futsal players are seen in action during the Week-15 matches of the MFF Futsal League II. **PHOTO: MFF**

place. The Sun Far and SGF teams scored 30 points each. The Seven, M-Million and Noka United teams secured 9, 6 and 5 points, respectively, placing them at the bottom of the standings after week 15 matches. — Ko Nyi Lay/KZL

## Klopp ranks Liverpool's League Cup glory as his 'most special' trophy

JURGEN Klopp hailed Liverpool's League Cup final triumph against Chelsea as the "most special" trophy of his career as the German learned he can win with kids.

Virgil van Dijk clinched Liverpool's 1-0 win with a dramatic header two minutes from the end of extra-time at Wembley on Sunday.

Liverpool's victory was especially sweet for Klopp as it came during an injury-hit period for his club that forced him to field a remarkably inexperienced team.

The Reds boss started with 20-year-olds Conor Bradley and Harvey Elliott in his side and brought on Bobby Clark (19), James McConnell (19), Jayden Danns (18) and Jarell Quansah (21) from the bench.

Injuries had deprived Klopp of Mohamed Salah, Trent Alexander-Arnold, Diogo Jota, Darwin Nunez, Alisson Becker



Liverpool's captain Virgil Van Dijk (1st L) scores the winning goal in extra-time during the English Football League Cup final match between Chelsea and Liverpool in London, Britain, on 25 February 2024. **PHOTO: XINHUA**

and Joel Matip among others, while Ryan Gravenberch was stretchered off in the first half.

In the circumstances, Klopp ranked the seventh major trophy of his nine-year Liverpool reign as the most memorable of his career.

"In more than 20 years it is

easily the most special trophy I have ever won. It is absolutely exceptional," he said.

"Sometimes people ask me if I'm proud of things and it's really tricky, I wish I could feel pride more often but tonight is an overwhelming feeling.

— AFP

## Real Madrid beat Sevilla, while Barca move second in La Liga

REAL Madrid beat Sevilla 1-0 in La Liga on Sunday night to move eight points clear of FC Barcelona and nine in front of Girona thanks to an 81<sup>st</sup>-minute goal from Luka Modric.

Modric fired home an unstoppable effort from outside the area to end stubborn resistance from the visitors, who had ex-Madrid captain Sergio Ramos at the heart of their much-improved defence.

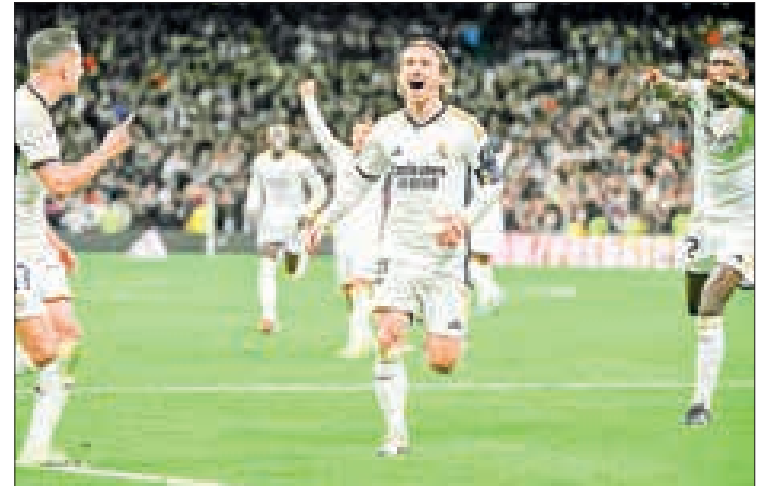
Ramos received a homage from Real Madrid for his 671 matches at the club, before he and his Sevilla teammates went

ro scored spectacular brace to cancel out goals from Angel Correa and Rodrigo de Paul.

Athletic Bilbao, who play Atletico in the Copa del Rey semifinal on Thursday, were unable to take advantage of Atletico's slip-up as they lost 3-1 away to Real Betis on a day when everything seemed to go wrong for them.

Chimy Avila put Betis ahead with his first goal for the club, and it was 2-0 when Unai Simon made a save only for the ball to rebound off Yuri Berchiche and end up in the net.

Nico Williams was then sent



Real Madrid's Croatian midfielder 10 Luka Modric celebrates scoring his team's first goal during the Spanish league football match between Real Madrid CF and Sevilla FC at the Santiago Bernabeu stadium in Madrid on 25 February 2024. **PHOTO: AFP**

close to frustrating the fans in the Bernabeu.

Modric's strike came after the ball had been only half-cleared, although Sevilla complained the original ball into their area had been aimed at Antonio Rudiger, who was in a clear offside position.

Both keepers made decent saves to keep the score at 0-0 until Modric's goal.

FC Barcelona produced arguably their best performance this season to beat Getafe 4-0 on Saturday

Goals from Raphinha, Joao Felix, Frenkie de Jong and Fermin Lopez beat a below-par Getafe to move Barca ahead of Girona, who play on Monday.

Atletico Madrid, who were without the injured Antoine Griezmann, could only draw away to bottom-of-the-table Almeria, for whom Luka Rome-

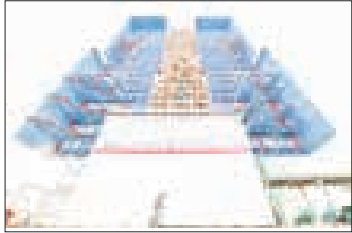
off for the visitors after sarcastically applauding the referee, and Yuri had to leave the pitch with a hamstring injury.

Gorka Guruzeta pulled a goal back for Athletic with a header in first-half injury time, but Johnny Cardoso's 67<sup>th</sup>-minute shot made the points safe for Betis.

Osasuna and Las Palmas drew a mid-table match 1-1, with Unai Garcia opening the scoring for the home side with a 48<sup>th</sup>-minute volley, only for Kirian Rodriguez to smash home from just outside of the area in the 52<sup>nd</sup> minute to assure a point.

Darwin Machis scored a 99<sup>th</sup>-minute goal that saw Cadiz come back from 2-0 down at home to Celta Vigo to claim a point that maintains their chances of avoiding relegation. — Xinhua





People wait to leave for Egypt via the Rafah crossing in the southern Gaza Strip, 25 February 2024. PHOTO: XINHUA

## UN voices alarm as Israel says preparing for Rafah invasion

ISRAEL said Monday its army had readied a plan to evacuate Gazans ahead of a feared invasion of far-southern Rafah, leading the UN chief to warn a ground attack would “put the final nail in the coffin” of its aid operations.

UN Secretary-General Antonio Guterres said that Rafah — where 1.4 million Palestinians live in crowded shelters near the Egyptian border — is also “the core of the humanitarian aid operation” in besieged Gaza.

In another shock impact of the almost five-month-old war, Palestinian prime minister Mohammad Shtayyeh

in the occupied West Bank handed in his government’s resignation to the head of the Palestinian Authority, president Mahmud Abbas.

Shtayyeh cited “developments related to the aggression against the Gaza Strip and the escalation in the West Bank and Jerusalem” where deadly violence has surged amid the Gaza war started by Hamas’s 7 October attack.

Israel’s top ally the United States and other powers discussing how a post-war Gaza could be ruled have called for a reformed Palestinian Authority to take charge of both the West Bank and Gaza

in future. Shtayyeh in brief comments cited “the new reality in the Gaza Strip” and urged inter-Palestinian consensus and the “extension of the Authority’s rule over the entire land of Palestine”.

Heavy fighting raged on meanwhile in the Gaza Strip where Israeli forces launched new strikes and ground combat operations, killing 92 people overnight according to the health ministry of the Hamas-ruled territory.

Israel’s military campaign has killed at least 29,782 people in Gaza, mostly women and children, according to the ministry. — AFP

## Economic integration in Asia-Pacific “ranks close” to European Union: ADB

ECONOMIC integration in Asia-Pacific “now ranks close” to that of the European Union (EU) in terms of regional value chains and social integration, according to a report released by the Asian Development Bank (ADB) on Monday.

Based on the Asia-Pacific Regional Cooperation and Integration Index, the region shows integration comparable to the EU in regional value chains, along with people and social integration, said the Asian Economic Integration Report 2024.

“The most significant progress is observed in Asia and the Pacific’s technology and digital connectivity dimension, driven by adoption of digital transformation policies by many economies, the pace of which went up during the coronavirus disease (COVID-19) pandemic,” the report said.

According to the ADB report, regional integration has become “a crucial buffer against global shocks” and has helped mitigate their negative effects.

While rising protectionism and the risks of global fragmentation compound economic challenges, increased cooperation and investment in connectivity can strengthen economic resilience and provide mutual benefits, the report mentioned.

“Closer dialogue and discussion on regional policies will help Asian economies better meet the challenges and risks of supply chain vulnerability and climate change,” it said. — Xinhua



A soldier from a Russian anti-aircraft missile unit from the Ivanovo Airborne Forces. PHOTO SPUTNIK

## Russian forces take control of Lastochkino Village in Avdeyevka area – MoD

THE Russian armed forces are now in control of the Lastochkyne village in the Avdeyevka area, the Defence Ministry said on Monday.

“In the Avdeyevka direction, units of the centre grouping of forces liberated the village of Lastochkino and continued to improve the situ-

ation along the front line,” the ministry said in a statement.

The Russian military also repelled an attack in Rabotyno, while the Ukrainian forces lost up to 50 soldiers in the Kherson direction, the ministry added.

On 17 February, Ukrainian Commander-in-Chief Oleksandr Syrsky announced the deci-

sion to withdraw troops from Avdeyevka, a northern suburb of Donetsk. Volodymyr Zelensky said that the decision to pull out the troops had been made to “save people’s lives”. Later, the Russian Defence Ministry said that the Russian military had taken full control of the city of Avdeyevka. — Sputnik